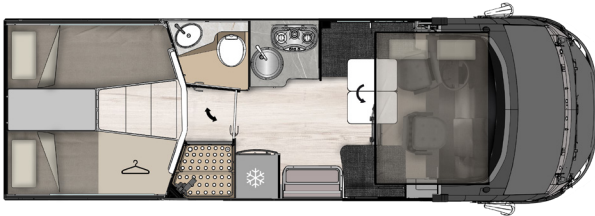


**SERIES 800**  
**NEVIS 870**

HOMOLOGATED SEATS	4
BERTHS	4 (+1 OPT)
SEATS AT THE TABLE	4



## PACK

### NEVIS SERIES 800 PACK

- Two-colour 16" alloy wheel rims
- Leather covered steering wheel and gear lever knob
- Techno Dashboard
- Electric handbrake
- TPMS (Sensore monitoraggio pressione pneumatici)
- 9" touch screen radio Android Auto / Apple CarPlay wireless
- Rear-view camera
- 200 w solar panel with MPPT controller

### MATIC FIAT PACK – Nevis Series 800 Pack required

- Automatic transmission
- "Matic" graphic pattern
- Composite suspension\*
- \* Not available on heavy chassis 4.25 - 4.4 t

### EXTRA TECH PACK – Nevis Series 800 Pack required

- Full Digital Cluster
- Automatic cab climate control system
- Wireless charger for smartphones

### NEVIS ENJOY OUTDOOR PACK

- Anthracite awning 5 m
- External gas socket
- Connection for external shower (garage)
- External multimedia socket (12 V/220 V/TV)
- Equipped garage wall

### EXTRA WARM / EXTRA WARM DIESEL PACK

- COMBI 6 GAS + ELECTRIC / DIESEL + ELECTRIC heater
- Step insulation
- Winter Pack
- Electrically heated floor

### 32" DIGITAL / SATELLITE TV PACK

- 32" Smart TV
- Digital / satellite antenna

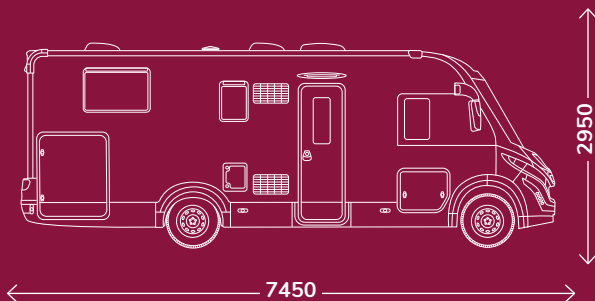
### 32" TV WI-FI PACK

- 32" Smart TV
- Wi-Fi Router

S= standard O=optional VTR= Fibreglas MTS= multi-layered plywood

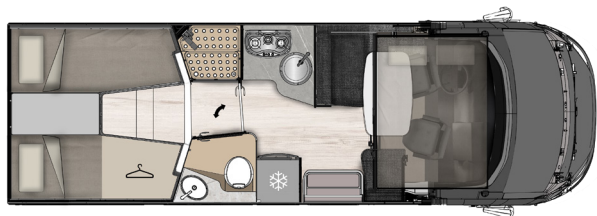
The mass in running order includes the weight of the empty base vehicle, of the driver (75 kg), 100% of the fuel (60-l tank), fresh water (tank filled with 20 l while travelling), and aluminium gas cylinders (max.7 kg) filled to 90% of their capacity, and tolerance specified in the type-approval (+/- 5%) (2007/46/EC). Anything not included in the standard version of the vehicle, both living unit and chassis, results in an increase in weight in running order with resulting decreased payload up to the possible reduction of approved seats in the case of the total weight for the available payload value. The available payloads result from the difference between maximum permissible mass and running order mass and have a tolerance of 5%. During the purchase phase it is necessary to check the weight of the options to be installed on the vehicle.

Chassis	FIAT
Engine, Power	2,2 MJ 140 HP
Maximum technically permissible weight (Kg)	3500
Weight unladen in running conditions (Kg)	2910
Pay Load (Kg)	590
Wheelbase (mm)	4035
Maximum towable weight (kg)	2000
Wheels dimensions	15"
Manual air conditioning	S
Driver and Passenger airbag	S
Cruise Control with speed limiter	S
ABS / ESC / TRACTION +	S/S/S
Driver and passenger swivelling seats	S
DRL LED (Day running light)	S
4 season tyres	S
Steering wheels control	S
<b>Dimensions and places</b>	
External length (mm) / External width (mm)	7450 / 2350
External height(cm) / Internal height (cm)	295 / 208
Auxiliary bed in dinette	O
Rear Bed (cm)	200x80 + 200x80-200x212
Dimensions Auxiliary bed in Dinette (cm)	216x103(75) (O)
Elevating Bed (cm)	185x134
Additional seat rear bed	S
Locker (useful opening, cm)	115x95
Max. internal garage height (cm)	121
Floor / walls / roof thickness (cm)	5,4 / 3 / 3
Floor / walls / roof material	MTS / VTR / VTR
Fiberglass roof, hail-proof	S
<b>Installations</b>	
Burners	3
Tank capacity : clear water / wastewater (l)	20(120) / 100
Automatic trivalent fridge ( 220V, 12V, gas ) (l)	145
Standard heating system	Combi Gas 4 kW
Space for 2 gas bottles (tot. Max 15 kg)	S
Bathroom window (double opaque glass)	S
Integrated entry step	S
Heated garage locker	S
<b>Skylight</b>	
Rear skylight (mm)	S (400x400) / O (960x655)
Central skylight (mm)	S (400x400)
Dinette skylight (mm)	S (700x500) / O (960x655)
Double-glazed windows with blind / mosquito net	S
<b>Equipments</b>	
Pleated cab blind	S
Beds with staves	S
CP Plus control panel	S
32" TV holder	S
Internal LED lightening	S
<b>Exteriors</b>	
Entrance door with fixed window	S
Flyscreen for entrance door	S
Entrance door with two central locking points	S
XL Entrance door	S
External LED light	S



**SERIES 800**  
**NEVIS 873**

HOMOLOGATED SEATS	5
BERTHS	5
SEATS AT THE TABLE	5



## PACK

### NEVIS SERIES 800 PACK

- Two-colour 16" alloy wheel rims
- Leather covered steering wheel and gear lever knob
- Techno Dashboard
- Electric handbrake
- TPMS (Sensore monitoraggio pressione pneumatici)
- 9" touch screen radio Android Auto / Apple CarPlay wireless
- Rear-view camera
- 200 w solar panel with MPPT controller

### MATIC FIAT PACK – Nevis Series 800 Pack required

- Automatic transmission
- "Matic" graphic pattern
- Composite suspension\*
- \* Not available on heavy chassis 4.25 - 4.4 t

### EXTRA TECH PACK – Nevis Series 800 Pack required

- Full Digital Cluster
- Automatic cab climate control system
- Wireless charger for smartphones

### NEVIS ENJOY OUTDOOR PACK

- Anthracite awning 5 m
- External gas socket
- Connection for external shower (garage)
- External multimedia socket (12 V/220 V/TV)
- Equipped garage wall

### EXTRA WARM / EXTRA WARM DIESEL PACK

- COMBI 6 GAS + ELECTRIC / DIESEL + ELECTRIC heater
- Step insulation
- Winter Pack
- Electrically heated floor

### 32" DIGITAL / SATELLITE TV PACK

- 32" Smart TV
- Digital / satellite antenna

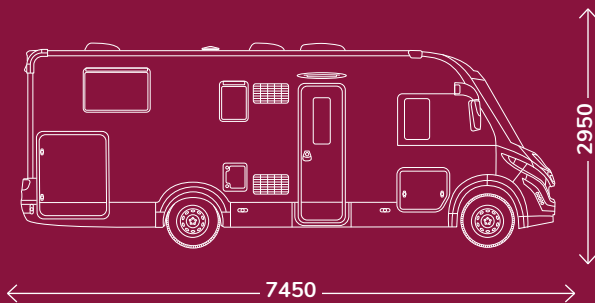
### 32" TV WI-FI PACK

- 32" Smart TV
- Wi-Fi Router

S= standard O=optional VTR= Fiberglass MTS= multi-layered plywood

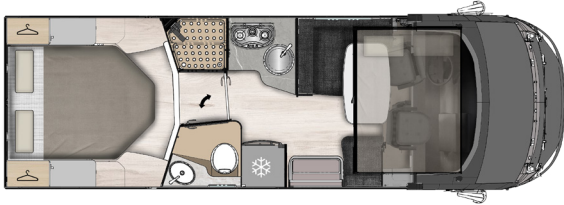
The mass in running order includes the weight of the empty base vehicle, of the driver (75 kg), 100% of the fuel (60-l tank), fresh water (tank filled with 20 l while travelling), and aluminium gas cylinders (max.7 kg) filled to 90% of their capacity, and tolerance specified in the type-approval (+/- 5%) (2007/46/EC). Anything not included in the standard version of the vehicle, both living unit and chassis, results in an increase in weight in running order with resulting decreased payload up to the possible reduction of approved seats in the case of the total weight for the available payload value. The available payloads result from the difference between maximum permissible mass and running order mass and have a tolerance of 5%. During the purchase phase it is necessary to check the weight of the options to be installed on the vehicle.

Chassis	FIAT
Engine, Power	2,2 MJ 140 HP
Maximum technically permissible weight (Kg)	3500
Weight unladen in running conditions (Kg)	2910
Pay Load (Kg)	590
Wheelbase (mm)	4035
Maximum towable weight (kg)	2000
Wheels dimensions	15"
Manual air conditioning	S
Driver and Passenger airbag	S
Cruise Control with speed limiter	S
ABS / ESC / TRACTION +	S/S/S
Driver and passenger swivelling seats	S
DRL LED (Day running light)	S
4 season tyres	S
Steering wheels control	S
<b>Dimensions and places</b>	
External length (mm) / External width (mm)	7450 / 2350
External height(cm) / Internal height (cm)	295 / 208
Auxiliary bed in dinette	S
Rear Bed (cm)	200x80 + 200x80-200x212
Dimensions Auxiliary bed in Dinette (cm)	216x107(48)
Elevating Bed (cm)	185x134
Additional seat rear bed	S
Locker (useful opening, cm)	115x95
Max. internal garage height (cm)	121
Floor / walls / roof thickness (cm)	5,4 / 3 / 3
Floor / walls / roof material	MTS / VTR / VTR
Fiberglass roof, hail-proof	S
<b>Installations</b>	
Burners	3
Tank capacity : clear water / wastewater (l)	20(100) / 100
Automatic trivalent fridge ( 220V, 12V, gas ) (l)	145
Standard heating system	Combi Gas 4 kW
Space for 2 gas bottles (tot. Max 15 kg)	S
Bathroom window (double opaque glass)	S
Integrated entry step	S
Heated garage locker	S
<b>Skylight</b>	
Rear skylight (mm)	S (400x400) / O (960x655)
Central skylight (mm)	S (400x400)
Dinette skylight (mm)	S (700x500) / O (960x655)
Double-glazed windows with blind / mosquito net	S
<b>Equipments</b>	
Pleated cab blind	S
Beds with staves	S
CP Plus control panel	S
32" TV holder	S
Internal LED lightening	S
<b>Exteriors</b>	
Entrance door with fixed window	S
Flyscreen for entrance door	S
Entrance door with two central locking points	S
XL Entrance door	S
External LED light	S



**SERIES 800**  
**NEVIS 879**

HOMOLOGATED SEATS	5
BERTHS	5
SEATS AT THE TABLE	5



## PACK

### NEVIS SERIES 800 PACK

- Two-colour 16" alloy wheel rims
- Leather covered steering wheel and gear lever knob
- Techno Dashboard
- Electric handbrake
- TPMS (Sensore monitoraggio pressione pneumatici)
- 9" touch screen radio Android Auto / Apple CarPlay wireless
- Rear-view camera
- 200 w solar panel with MPPT controller

### MATIC FIAT PACK – Nevis Series 800 Pack required

- Automatic transmission
- "Matic" graphic pattern
- Composite suspension\*
- \* Not available on heavy chassis 4.25 - 4.4 t

### EXTRA TECH PACK – Nevis Series 800 Pack required

- Full Digital Cluster
- Automatic cab climate control system
- Wireless charger for smartphones

### NEVIS ENJOY OUTDOOR PACK

- Anthracite awning 5 m
- External gas socket
- Connection for external shower (garage)
- External multimedia socket (12 V/220 V/TV)
- Equipped garage wall

### EXTRA WARM / EXTRA WARM DIESEL PACK

- COMBI 6 GAS + ELECTRIC / DIESEL + ELECTRIC heater
- Step insulation
- Winter Pack
- Electrically heated floor

### 32" DIGITAL / SATELLITE TV PACK

- 32" Smart TV
- Digital / satellite antenna

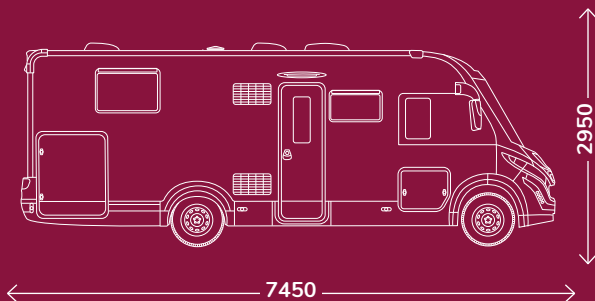
### 32" TV WI-FI PACK

- 32" Smart TV
- Wi-Fi Router

S= standard O=optional VTR= Fibreglas MTS= multi-layered plywood

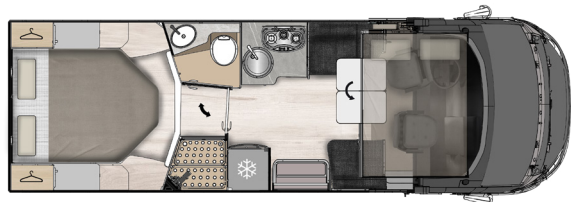
The mass in running order includes the weight of the empty base vehicle, of the driver (75 kg), 100% of the fuel (60-l tank), fresh water (tank filled with 20 l while travelling), and aluminium gas cylinders (max.7 kg) filled to 90% of their capacity, and tolerance specified in the type-approval (+/- 5%) (2007/46/EC). Anything not included in the standard version of the vehicle, both living unit and chassis, results in an increase in weight in running order with resulting decreased payload up to the possible reduction of approved seats in the case of the total weight for the available payload value. The available payloads result from the difference between maximum permissible mass and running order mass and have a tolerance of 5%. During the purchase phase it is necessary to check the weight of the options to be installed on the vehicle.

Chassis	FIAT
Engine, Power	2,2 MJ 140 HP
Maximum technically permissible weight (Kg)	3500
Weight unladen in running conditions (Kg)	2910
Pay Load (Kg)	590
Wheelbase (mm)	4035
Maximum towable weight (kg)	2000
Wheels dimensions	15"
Manual air conditioning	S
Driver and Passenger airbag	S
Cruise Control with speed limiter	S
ABS / ESC / TRACTION +	S/S/S
Driver and passenger swivelling seats	S
DRL LED (Day running light)	S
4 season tyres	S
Steering wheels control	S
<b>Dimensions and places</b>	
External length (mm) / External width (mm)	7450 / 2350
External height(cm) / Internal height (cm)	295 / 208
Auxiliary bed in dinette	S
Electric rear Bed (cm)	190x150
Rear bed height adjustment	S
Dimensions Auxiliary bed in Dinette (cm)	216x107(48)
Elevating Bed (cm)	185x134
Locker (useful opening, cm)	115x95
Max. internal garage height (cm)	125
Floor / walls / roof thickness (cm)	5,4 / 3 / 3
Floor / walls / roof material	MTS / VTR / VTR
Fiberglass roof, hail-proof	S
<b>Installations</b>	
Burners	3
Tank capacity : clear water / wastewater (l)	20(100) / 100
Automatic trivalent fridge ( 220V, 12V, gas ) (l)	145
Standard heating system	Combi Gas 4 kW
Space for 2 gas bottles (tot. Max 15 kg)	S
Bathroom window (double opaque glass)	S
Integrated entry step	S
Heated garage locker	S
<b>Skylight</b>	
Rear skylight (mm)	S (400x400) / O (960x655)
Central skylight (mm)	S (400x400)
Dinette skylight (mm)	S (700x500) / O (960x655)
Double-glazed windows with blind / mosquito net	S
<b>Equipments</b>	
Pleated cab blind	S
Beds with staves	S
CP Plus control panel	S
32" TV holder	S
Internal LED lightening	S
<b>Exteriors</b>	
Entrance door with fixed window	S
Flyscreen for entrance door	S
Entrance door with two central locking points	S
XL Entrance door	S
External LED light	S



**SERIES 800**  
**NEVIS 881** 

HOMOLOGATED SEATS	4
BERTHS	4 (+1 OPT)
SEATS AT THE TABLE	4



## PACK

### NEVIS SERIES 800 PACK

- Two-colour 16" alloy wheel rims
- Leather covered steering wheel and gear lever knob
- Techno Dashboard
- Electric handbrake
- TPMS (Sensore monitoraggio pressione pneumatici)
- 9" touch screen radio Android Auto / Apple CarPlay wireless
- Rear-view camera
- 200 w solar panel with MPPT controller

### MATIC FIAT PACK – Nevis Series 800 Pack required

- Automatic transmission
- "Matic" graphic pattern
- Composite suspension\*
- \* Not available on heavy chassis 4.25 - 4.4 t

### EXTRA TECH PACK – Nevis Series 800 Pack required

- Full Digital Cluster
- Automatic cab climate control system
- Wireless charger for smartphones

### NEVIS ENJOY OUTDOOR PACK

- Anthracite awning 5 m
- External gas socket
- Connection for external shower (garage)
- External multimedia socket (12 V/220 V/TV)
- Equipped garage wall

### EXTRA WARM / EXTRA WARM DIESEL PACK

- COMBI 6 GAS + ELECTRIC / DIESEL + ELECTRIC heater
- Step insulation
- Winter Pack
- Electrically heated floor

### 32" DIGITAL / SATELLITE TV PACK

- 32" Smart TV
- Digital / satellite antenna

### 32" TV WI-FI PACK

- 32" Smart TV
- Wi-Fi Router

S= standard O=optional VTR= Fiberglass MTS= multi-layered plywood

The mass in running order includes the weight of the empty base vehicle, of the driver (75 kg), 100% of the fuel (60-l tank), fresh water (tank filled with 20 l while travelling), and aluminium gas cylinders (max.7 kg) filled to 90% of their capacity, and tolerance specified in the type-approval (+/- 5%) (2007/46/EC). Anything not included in the standard version of the vehicle, both living unit and chassis, results in an increase in weight in running order with resulting decreased payload up to the possible reduction of approved seats in the case of the total weight for the available payload value. The available payloads result from the difference between maximum permissible mass and running order mass and have a tolerance of 5%. During the purchase phase it is necessary to check the weight of the options to be installed on the vehicle.

Chassis	FIAT
Engine, Power	2,2 MJ 140 HP
Maximum technically permissible weight (Kg)	3500
Weight unladen in running conditions (Kg)	2910
Pay Load (Kg)	590
Wheelbase (mm)	4035
Maximum towable weight (kg)	2000
Wheels dimensions	15"
Manual air conditioning	S
Driver and Passenger airbag	S
Cruise Control with speed limiter	S
ABS / ESC / TRACTION +	S/S/S
Driver and passenger swivelling seats	S
DRL LED (Day running light)	S
4 season tyres	S
Steering wheels control	S
<b>Dimensions and places</b>	
External length (mm) / External width (mm)	7450 / 2350
External height(cm) / Internal height (cm)	295 / 208
Auxiliary bed in dinette	O
Rear Bed (cm)	190x150
Rear bed height adjustment	S
Dimensions Auxiliary bed in Dinette (cm)	216x103(75) (O)
Elevating Bed (cm)	185x134
Locker (useful opening, cm)	115x95
Max. internal garage height (cm)	125
Floor / walls / roof thickness (cm)	5,4 / 3 / 3
Floor / walls / roof material	MTS / VTR / VTR
Fiberglass roof, hail-proof	S
<b>Installations</b>	
Burners	3
Tank capacity : clear water / wastewater (l)	20(120) / 100
Automatic trivalent fridge ( 220V, 12V, gas ) (l)	145
Standard heating system	Combi Gas 4 kW
Space for 2 gas bottles (tot. Max 15 kg)	S
Bathroom window (double opaque glass)	S
Integrated entry step	S
Heated garage locker	S
<b>Skylight</b>	
Rear skylight (mm)	S (400x400) / O (960x655)
Central skylight (mm)	S (400x400)
Dinette skylight (mm)	S (700x500) / O (960x655)
Double-glazed windows with blind / mosquito net	S
<b>Equipments</b>	
Pleated cab blind	S
Beds with staves	S
CP Plus control panel	S
32" TV holder	S
Internal LED lightening	S
<b>Exteriors</b>	
Entrance door with fixed window	S
Flyscreen for entrance door	S
Entrance door with two central locking points	S
XL Entrance door	S
External LED light	S



The masses indicated in the technical data sheets refer to the provisions of European Directive 2007/46/EC.

## **MASS IN RUNNING ORDER**

It includes the weight of the empty base vehicle, of the driver (75 kg), 100% of the fuel (60-l tank), fresh water (tank filled with 20 l while travelling), and a gas tank for living purposes (20 kg). The mass in running order, and consequently the payload and/or certified seats may vary depending on the accessories installed.

## **PAYLOAD**

This consists of the difference between the maximum technically permissible laden mass and the mass in running order. It includes elements for living purposes, the transported passengers defined by the manufacturer (driver excluded), and the personal effects.

The payload calculation is based on the following parameters: 75 kg for each passenger (driver excluded), 10 kg of baggage for each passenger and for the driver, 10 kg for each metre of length of the vehicle, plus the remaining payload, which can be used for the installation of accessories or for additional baggage.

All masses and loads of the empty vehicle have a tolerance of +/- 5%, in compliance with Directive 2007/46/EC.

Any optional equipment increases the mass in running order and decreases the payload.

The weight of non-standard accessories is not included in the mass in running order indicated in this catalogue. Additional accessories and devices reduce the payload by a quantity equal to their weight; the incidence of the weight of the individual accessories is shown in the special column in the technical data sheets or can be requested at our dealers. In case certain accessories are installed (for example, additional elements such as coupling device or motorbike rack), the mass of these accessories will affect the payload, possibly reducing it along with the number of certified seats. Please note that the law does not allow the maximum permissible mass to be exceeded, which can be consulted under the specific heading of the data sheets. Please make sure that the maximum loads on the axles and the maximum technically permissible load mass are not exceeded during the complete loading phase of the vehicle. The regulations and requirements of each country may entail changes in the characteristics of this table. The number of certified seats may vary depending on the traffic regulations in force in each country. When driving, the fresh water tank must be filled to a maximum of 20 litres.